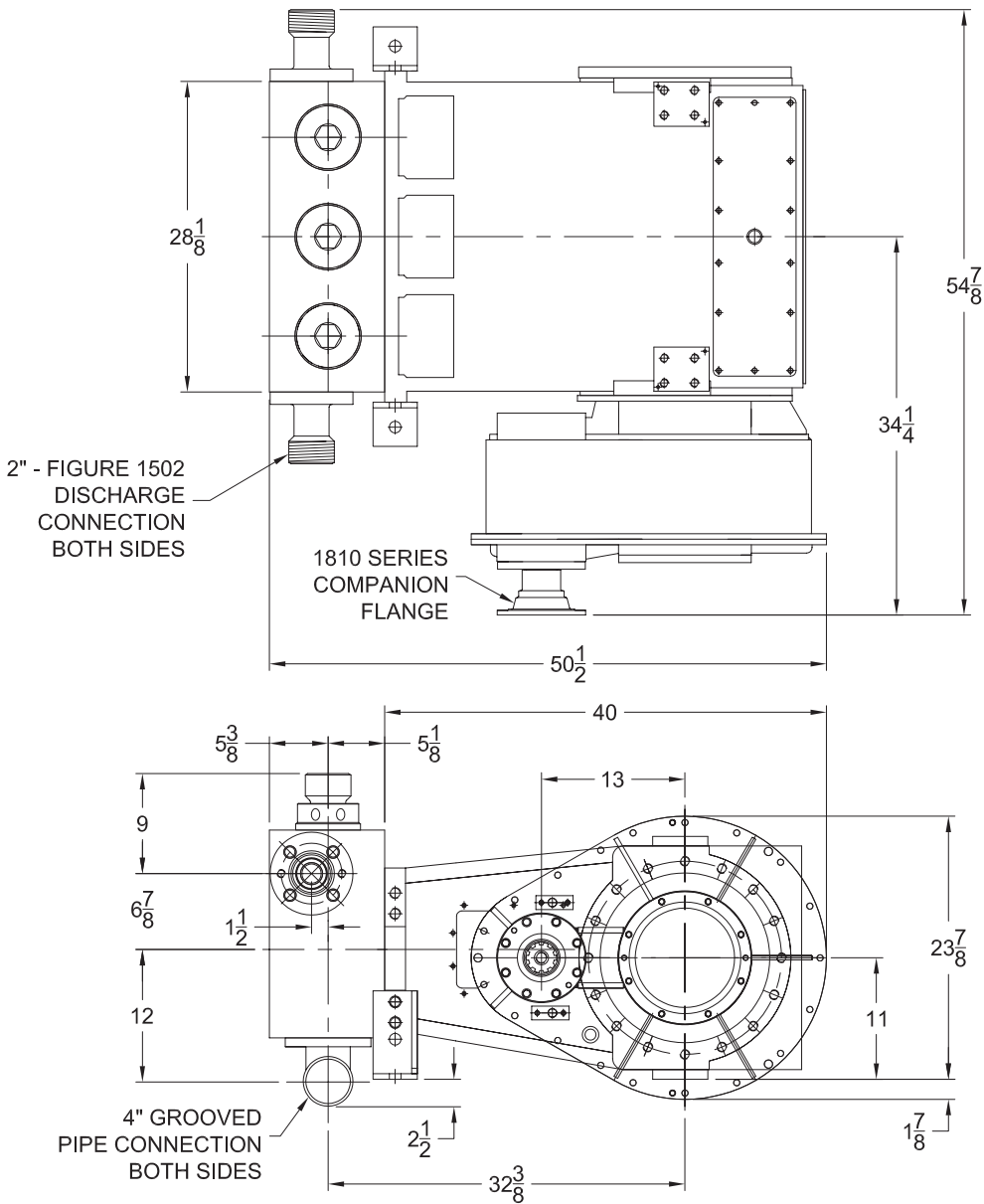


W-600S Plunger Pump



Specifications

- Pump Type:**
Intermittent duty reciprocating pump
- Maximum Input Horsepower:** 600 Intermittent
- Stroke Length:** 6 inches
- Maximum Rod Load:** 100,000 lbs.
- Approximate Weight:** 4,600 lbs.
- Pump Power End:**
Fabricated of high strength alloy steel
- Gears:** Helical
- Gear Ratio:** 4.6:1
- Rod Bearings:** Shell type replaceable
- Main Bearings:** Straight roller
- Gearbox Bearings:** Tapered roller
- Crankshaft:** One-piece forged alloy steel nitrided
- Connecting Rod:** Cast steel
- Crosshead:** Cast steel
- Crosshead Slide:**
Shim adjustable, replaceable cast iron
- Fluid-End:** Plunger type mono-block design
- Discharge Connection:** 2-inch 1502 Half Union
Forged Steel Connection - Either Side
- Suction:** Fabricated steel with
4" grooved connections - both ends
- Valves and Seats:** Service Master™ II
- Power End Lubrication:** 12-18 GPM Required
- Packing Lubrication:** Optional Air Driven Air/Oil or
Mechanical Oil Drip System Available

| Pump Model | Flange Connections | |
|------------|----------------------------|--------------------------|
| | Discharge Connection Sizes | Suction Connection Sizes |
| W600-S | 2 (50.8) 1502 Half Union | 4 (101.6) Grooved Pipe |

W-600S Plunger Pump

Performance Data

| Plunger Diameter | Displacement Factors* @ 100% V. E. U.S. Gal. per Rev. | Pump Speed in Crankshaft Revolutions Per Minute (RPM) | | | | | | | | | |
|----------------------------------|--|---|----------------|-----------------------|----------------|-----------------------|----------------|-----------------------|----------------|-----------------------|----------------|
| | | 50 | | 120 | | 200 | | 300 | | 450 | |
| | | Flow @ 100% V. E. | Max Press. | Flow @ 100% V. E. | Max Press. | Flow @ 100% V. E. | Max Press. | Flow @ 100% V. E. | Max Press. | Flow @ 100% V. E. | Max Press. |
| | | U.S. Gal. per Min. | @ Flow PSIG | U.S. Gal. per Min. | @ Flow PSIG | U.S. Gal. per Min. | @ Flow PSIG | U.S. Gal. per Min. | @ Flow PSIG | U.S. Gal. per Min. | @ Flow PSIG |
| Inches | GPR | GPM | PSIG | GPM | PSIG | GPM | PSIG | GPM | PSIG | GPM | PSIG |
| 2.50 | .3825 | 19.12 | 20372 | 45.90 | 20165 | 76.50 | 12099 | 114.75 | 8066 | 172.12 | 5377 |
| 2.75 | .4628 | 23.14 | 16836 | 55.54 | 16665 | 92.56 | 9999 | 138.85 | 6666 | 208.27 | 4444 |
| 3.00 | .5508 | 27.54 | 14147 | 66.10 | 14003 | 110.16 | 8402 | 165.24 | 5601 | 247.86 | 3734 |
| 3.50 | .7497 | 37.48 | 10394 | 89.96 | 10288 | 149.94 | 6173 | 224.91 | 4115 | 337.36 | 2744 |
| 4.00 | .9792 | 48.96 | 7958 | 117.50 | 7877 | 195.84 | 4726 | 293.76 | 3151 | 440.64 | 2100 |
| 4.50 | 1.2393 | 61.96 | 6288 | 148.72 | 6224 | 247.86 | 3734 | 371.79 | 2489 | 557.68 | 1660 |
| Input Power | Brake** Horsepower | 253 | | 600 | | 600 | | 600 | | 600 | |
| Pinion RPM @4.60:1 Gear Ratio | | 230 | | 552 | | 920 | | 1380 | | 2070 | |

*V.E. = Volumetric Efficiency **BHP (Brake Horsepower) is based on 90% Mechanical Efficiency

The information and data on this sheet is accurate to the best of our knowledge and belief, but are intended for general information only. Applications suggested for the materials are described only to help readers make their own evaluations and decisions, and are neither guarantees nor to be construed as express or implied warranties of suitability for these or other applications. National Oilwell makes no warranty either express or implied beyond that stipulated in National Oilwell Standard Terms and Conditions of Sale.

Authorized Distributor:



NATIONAL OILWELL

www.natoil.com / customer.service@natoil.com

10000 Richmond, Houston, Texas 77042

(713)346-7500 (phone) • (713)346-7366 (fax)

©Copyright 2004 National Oilwell
PP010001338 Rev. 01