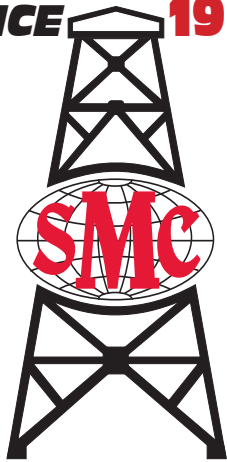


SINCE 1964

WELL SERVICING PUMPS

MODEL WS-340



SMC Mfg. & Supply, Inc.
 3409 Kermit Hwy.
 Odessa, TX 79764

432-337-4474
 800-553-3831
 432-334-7809 FAX
 larry.murray@smcmfgsupply.com



MADE IN USA

SMC MODEL: WS - 340

Specifications

H.P. MAX350
 STROKE..... 5 IN
 RATED SPEED - MAX..... 450 RPM
 PRESSURE - MAX 10,000 PSI

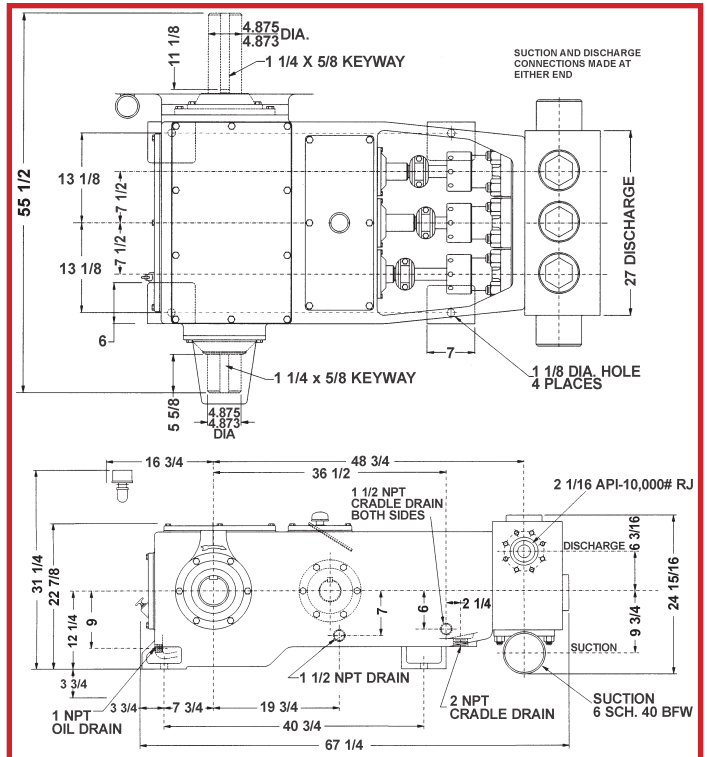
Connections

DISCH: 2 1/16" API 10⁺³ GBX
 SUCT: 6" BFW

WEIGHT:..... 5200 LBS
 (COMPARE: GARDNER-DENVER® MODEL PAH = 9250 LBS)

MAX FLOW 350 GPM

PUMP AND PARTS* Mfg in USA



Features

- CROSSHEADS, CONNECTING RODS EASILY REMOVED WITHOUT DISTURBING CRANKSHAFT
- LINERS AND/OR STUFFING BOXES CAN BE REMOVED WITHOUT A PULLER
- CLAMP-TYPE CONNECTIONS WITH ROD, PLUNGER OR PISTON ROD REDUCES MAINTENANCE
- LINER-PISTON SPRAY SYSTEM AVAILABLE FOR EXTENDED SERVICE
- DIFFERENT VOLUMES/PRESSURES ARE AVAILABLE WITH VARIOUS LARGE COMBINATIONS OF PLUNGERS/PACKING PISTON

Performance Data

English (Metric See Reverse Side)

Diameter, in.	Plungers Only 2 3/4"			Plungers Only 3"			3 1/2"			4"			Pistons Only 4 1/2"			
	gal/min. per RPM			gal/min. per RPM			gal/min. per RPM			gal/min. per RPM			gal/min. per RPM			
	.3857			.4590			.6247			.8160			1.0327			
	.0092			.0109			.0149			.0194			.0246			
RPM	Req'd. hp	PSI	gal/min.	bbl/min.	PSI	gal/min.	bbl/min.	PSI	gal/min.	bbl/min.	PSI	gal/min.	bbl/min.	PSI	gal/min.	bbl/min.
450	340	3020	174	4.13	2539	206.6	4.894	1870	281	6.69	1430	367	8.74	-	-	-
400	340	3400	154	3.67	2857	183.6	4.371	2100	250	5.95	1610	326	7.77	-	-	-
350	340	3890	135	3.21	3265	160.7	3.825	2400	219	5.21	1840	286	6.80	-	-	-
300	340	4530	116	2.75	3809	137.7	3.279	2800	187	4.46	2140	245	5.83	-	-	-
250	340	5440	96	2.30	4571	114.8	2.732	3360	156	3.72	2570	204	4.86	-	-	-
225	340	6040	87	2.07	5078	103.3	2.459	3730	141	3.35	2860	184	4.37	2260	232	5.53
200	340	6800	77	1.84	5713	91.8	2.186	4200	125	2.97	3210	163	3.89	2540	207	4.92
100	252	10000	39	.92	8403	45.9	1.093	6220	62	1.49	4760	82	1.94	3760	103	2.46
50	126	10000	19	.46	8403	23.0	0.546	6220	31	.74	4760	41	.97	3760	52	1.23
25	63	10000	10	.23	8403	11.5	0.273	6220	16	.37	4760	20	.49	3760	26	.61

Since 1964, one of the Largest Manufacturers in the USA of Quality Parts for OEM Oilfield Equipment.

* Except Liners

Metric Units

Diameter, in.		Plungers Only 69.9			Plungers Only 76.2			88.9			101.6			Pistons Only 114.3		
Liter/min. per RPM		1.4600			1.7375			2.3649			3.0889			3.9094		
M ³ /min. per RPM		.00146			.00174			.00236			.00308			.00391		
RPM	Req'd. hp	kg/ cm ²	L/ min.	M ³ / min.	kg/ cm ²	L/ min.	M ³ / min.	kg/ cm ²	L/ min.	M ³ / min.	kg/ cm ²	L/ min.	M ³ / min.	kg/ cm ²	L/ min.	M ³ / min.
450	340	214	657	.657	178.5	782	.782	132	1064	1.06	101	1390	1.39	-	-	-
400	340	240	584	.584	200.9	695	.695	148	946	.946	114	1236	1.23	-	-	-
350	340	275	511	.511	229.6	608	.608	170	828	.828	130	1081	1.08	-	-	-
300	340	321	438	.438	267.8	521	.521	198	709	.709	152	927	.927	-	-	-
1250	340	385	365	.365	321.4	435	.435	237	591	.591	182	772	.772	-	-	-
225	340	427	328	.328	357.0	391	.391	263	532	.532	202	695	.695	160	880	.880
200	340	481	292	.292	401.7	348	.348	297	473	.473	227	618	.618	180	782	.782
100	252	703	146	.146	590.8	174	.174	437	236	.236	335	309	.309	264	391	.391
50	126	703	73	.073	590.8	87	.087	437	118	.118	335	154	.154	264	195	.195
25	63	703	36	.036	590.8	44	.044	437	59	.059	335	77	.077	264	98	.098

Ratings are for intermittent service. Pressure up to those shown may be utilized for a period not to exceed a total of 4 hours in 240 hours. Caution: Pressures in excess of 5000 PSI should not be exceeded if equipped with liners and pistons. If an emergency exists - then only for a short period of time.

Information is presented for general information.
Special applications please contact factory.